



Discover Lifestyle Homes
At ***North-West Ahmedabad***





Actual Image

For Fast-paced Growth, Shift to North-West Ahmedabad

Ahmedabad & Gandhinagar are developing at an unprecedented pace. The premium 2, 2.5 & 3 BHK project in Jagatpur by Adani Realty will give its patrons a passage of opportunities with exceptional connectivity and proximity owing to its strategic location.

- ***Excellent Connectivity***
- ***Essential Services within Proximity***
- ***One of the Fastest Developing Business Hubs***
- ***One of the Fastest Growth Corridor of Ahmedabad & Gandhinagar***



Life is Progressing @ Jagatpur, North-West Ahmedabad

Sitting at the center of connectivity, our premium homes are close to everything that matters to you. Whether you require hospitals, schools, temples, or wish to hang out at the cafes on SG Road, we are near to everything.

Healthcare

K D Hospital - 3.6kms | SGVP Holistic Hospital - 3.6kms | Sola Civil Hospital - 4.9kms
HCG Cancer Hospital - 6.6kms | CIMS Hospital - 7.3kms | Zydus Hospital - 7.8kms

Education

Shanti Juniors Jagatpur - 0.2kms | Global Indian International School - 1.2kms | Nirma University - 2.9kms
SGVP International School - 3.3kms | Hiramani School - 3.6kms | GEMS Genesis International School - 4.9kms
Adani International School - 8.5kms

Temples

Naminathay Jain Temple - 1km | Vaishno Devi Temple - 4.1kms
Umiya Dham Temple - 4.6kms

Important Infrastructure

Sabarmati Railway Station - 8.1kms | International Airport - 18.9kms

• Map not to scale
• Kms. mentioned are approximate distances
• Source: Google maps



We Found The Pulse of The City

Our premium homes at North-West Ahmedabad are for the dreamers rising through ranks and discovering new heights of success. More than a home, it's an opportunity for you to live in the future of Ahmedabad.

Introducing
ATRIUS
2, 2.5 & 3 BHK
Premium Homes





Artistic Impression

Progress Comes From A Mindset

Atrius is meant to bring you to your happy state of mind. Experience a home that gives you freedom of space, comfort, and growth with:



Minimal Space
Wastage



Expansive Green
View*



Retail-Free
Residential
Development



Spacious Homes
with Balcony

*For select apartments

The Key To Your Future Lies Here

We have laid the foundation upon which you will progress, come and receive the key to your infinite future. Grab this opportunity to live your life to the fullest and provide your family with rich amenities and lively community under the Adani Realty ecosystem.



Intrinsically
Designed Landscape



Security & CCTV Surveillance
in Common Area on Ground Floor



Provision For
Piped Gas Connections*



Mini Club Area^



Multi-Purpose Lawn
With Pathway & Sit-Out



Multi-Purpose Court For
Outdoor Games



Gymnasium^



Yoga Lounge^



School Drop-Off



Multi-Purpose Hall^



Senior Citizen
Sit-Out



Children's Play Area



Water Body



Society Office^

^All marked amenities are part of the clubhouse



A Symbol of Quality

A forever home is built on three qualities: strength, sustainability and high functionality.



A Symbol of Celebration

A place where your moments of joy become priceless memories to cherish forever.



A Symbol of Healthy Lifestyle

Choosing your own time for your fitness journey is the real comfort in life.

A Symbol of Joy

A playful heart is a happy one, and you deserve to keep the child in you alive, always.



Artistic Impression

A Symbol of Togetherness

Your super special celebrations need a super special space that matches your standards of luxuries.



Artistic Impression



A Symbol of Opulence

The entrance to a new realm of elitism welcomes you everyday.

Artistic Impression

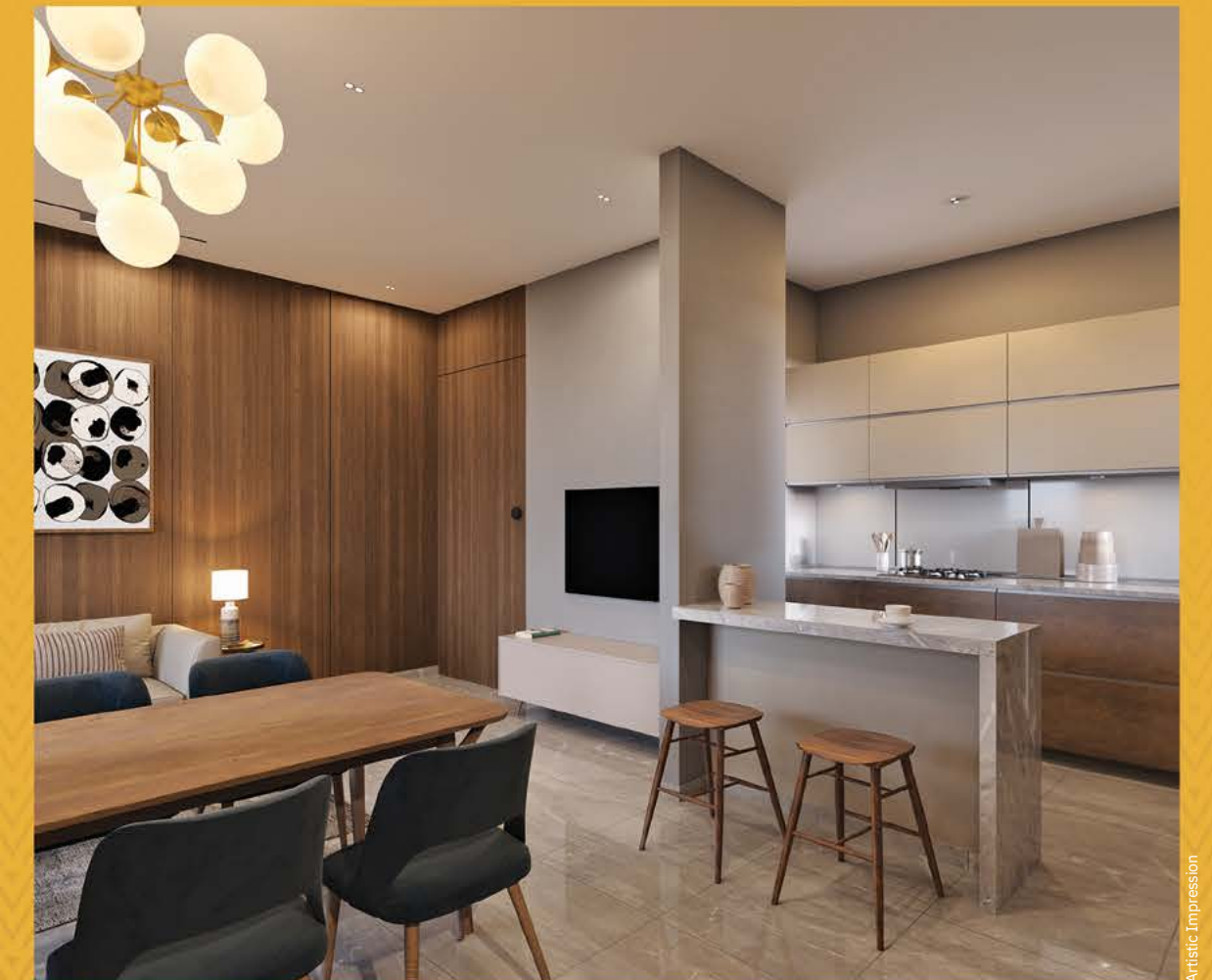


A Symbol of Grandeur

Coming to a lively vibe at home every day is the highest form of luxury one can have.

A Symbol of Abundance

Making every meal special for your family is a lovely feeling that brings content to your heart.



Artistic Impression



A Symbol of Relaxation

Unwind yourself from your daily routine and surround yourself with peace and positivity in your own cozy space.

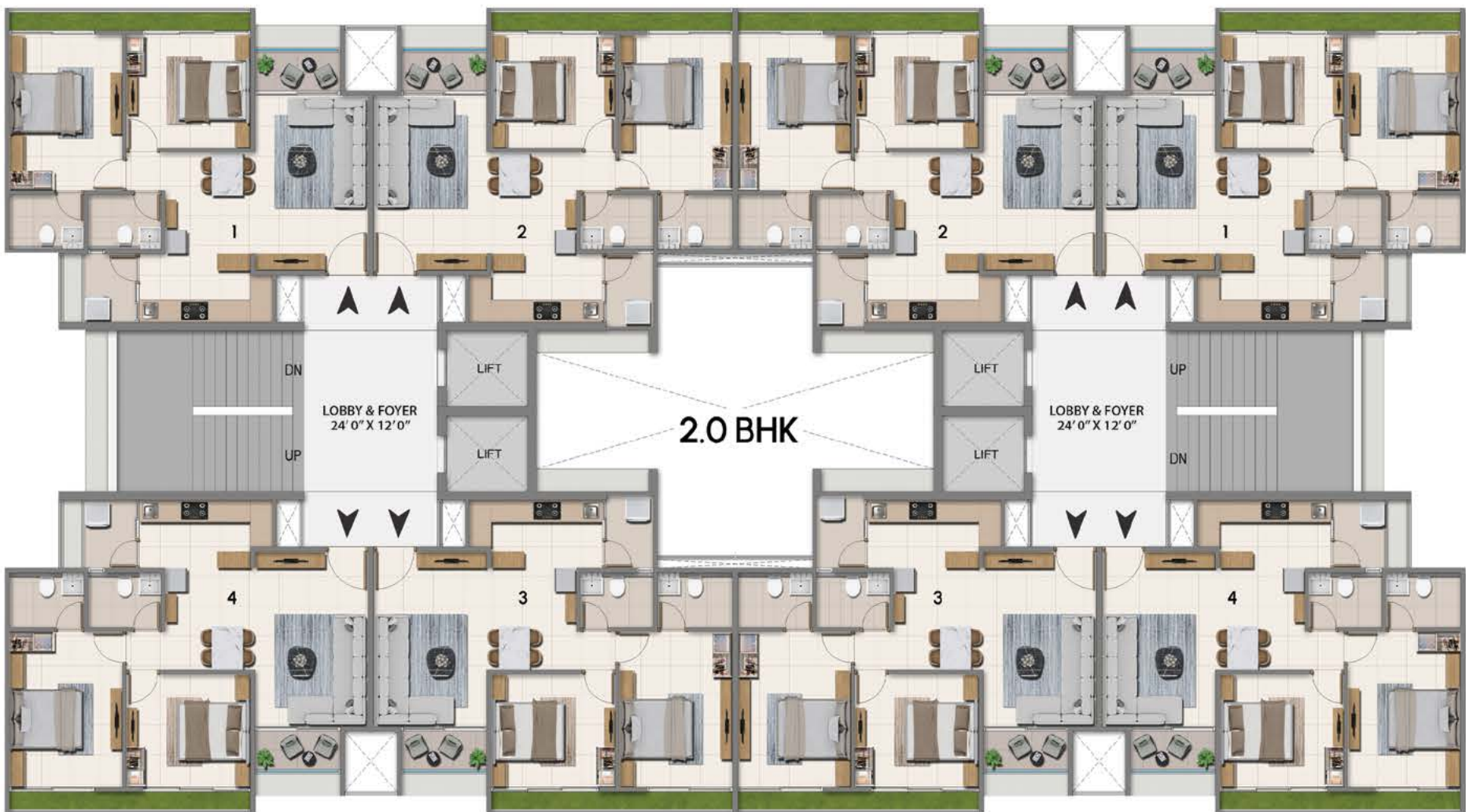
Master Layout



Legend

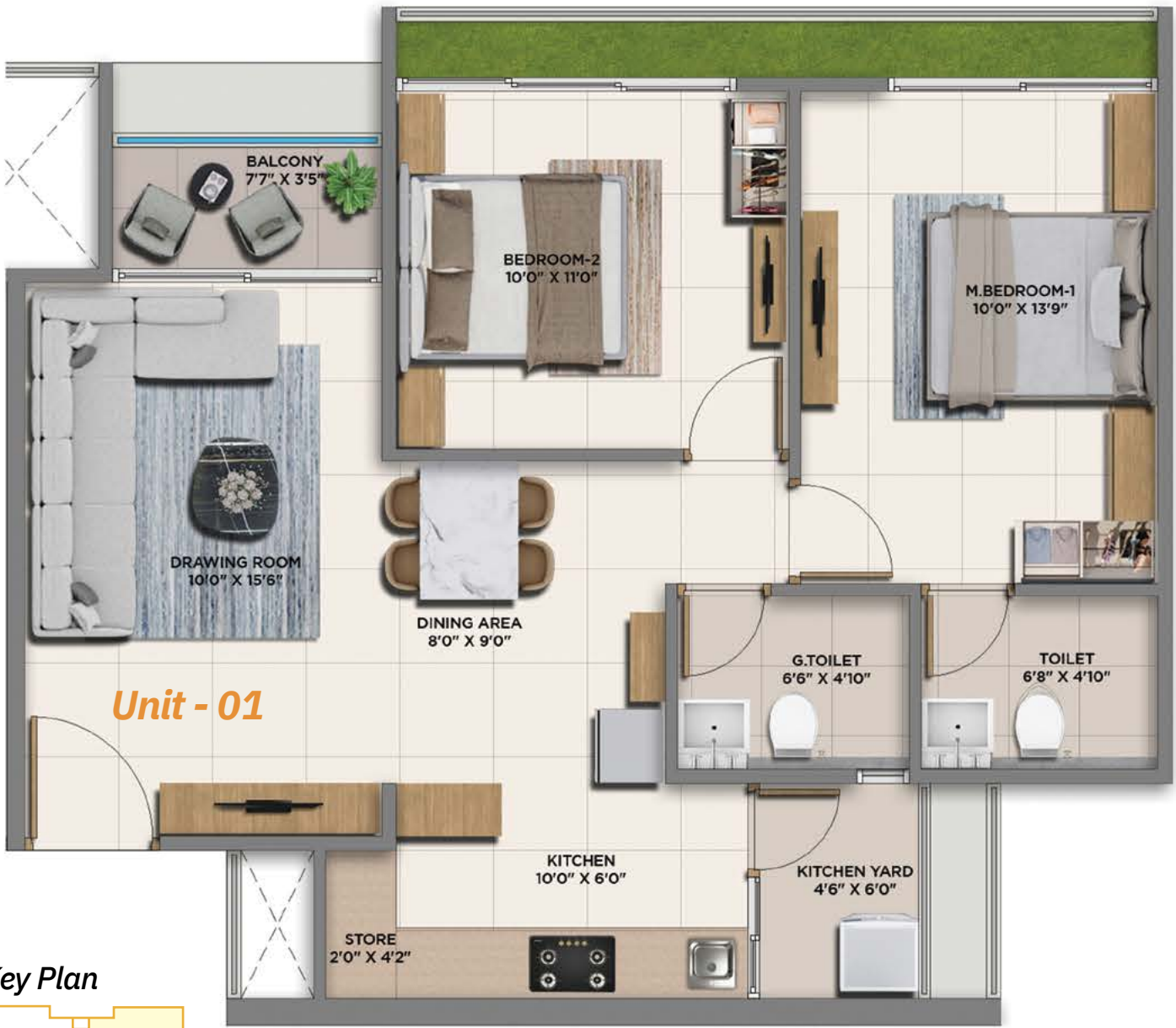
- | | | | |
|---|---|----|------------------------|
| 1 | Entry Gate | 7 | Parking |
| 2 | Security Cabin | 8 | Multi-Purpose Court |
| 3 | School Drop-Off Zone | 9 | Senior Citizen Sit-Out |
| 4 | Multi-Purpose Garden with Pathway & Sit-Out | 10 | No Vehicle Zone |
| 5 | Water Body | 11 | Ramps |
| 6 | Children's Play Area | 12 | Exit Gate |
| | | 13 | Club House |

2 BHK Typical Floor Plan C, D, G & H Block (1st to 10th Floor)

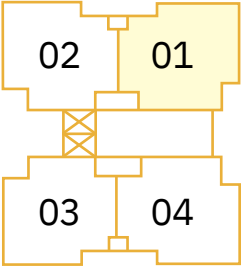


2 BHK Unit Plan

Unit - 01

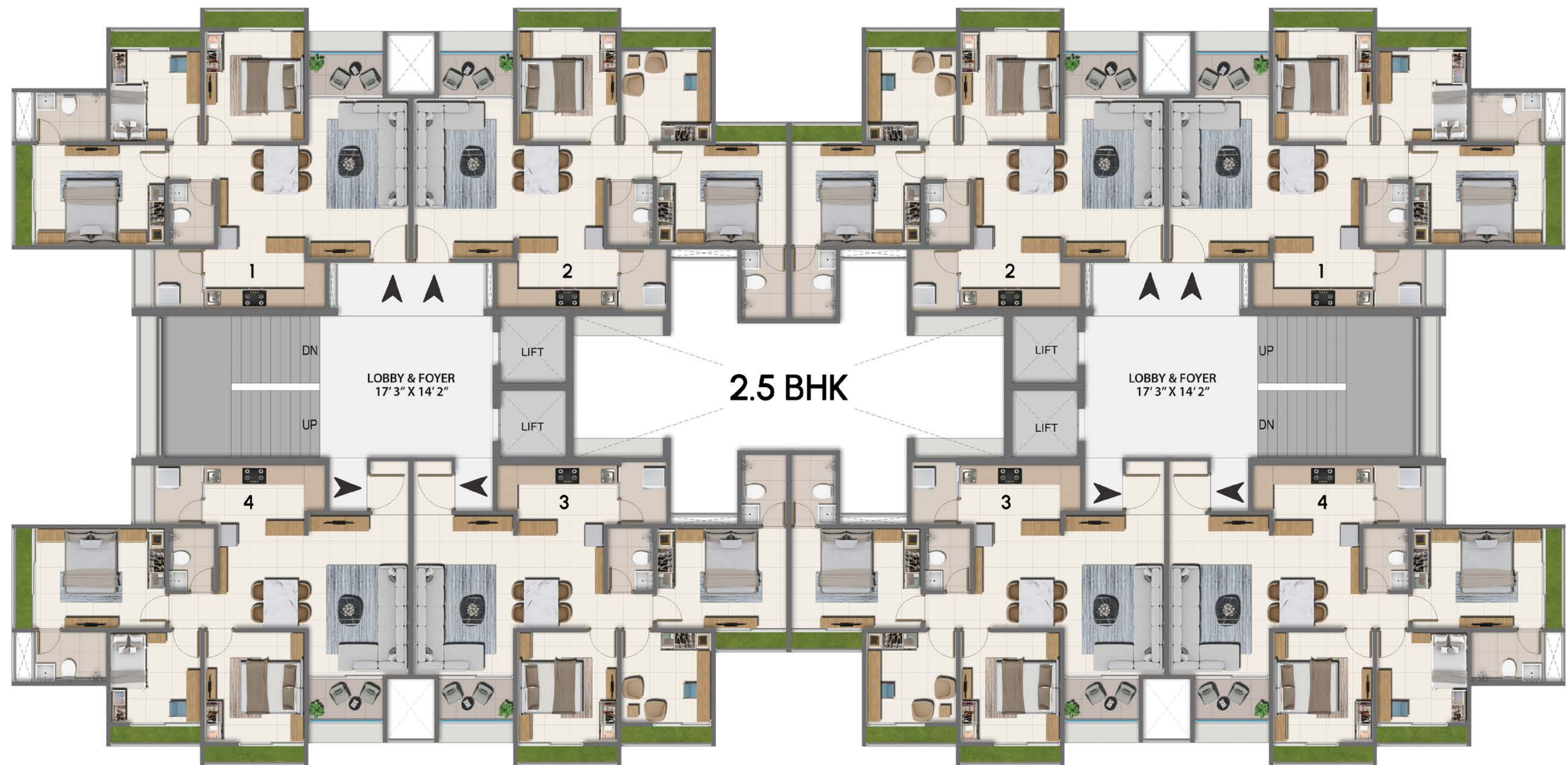


Key Plan



Unit Plan	Indicative Saleable Area	RERA Carpet + EA (Exclusive Area)
2 BHK	1,280 Sq. Ft. 118.92 Sq. Mt.	699.01 - 702.24 Sq. Ft. 64.94 - 65.24 Sq. Mt.

2.5 BHK Typical Floor Plan **E & F Block (1st to 10th Floor)**

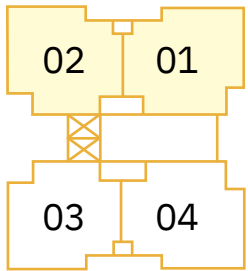


2.5 BHK Unit Plan

Unit - 02



Key Plan



Unit Plan	Indicative Saleable Area	RERA Carpet + EA (Exclusive Area)	
2.5 BHK (Unit 1 & 2)	1,489 Sq. Ft. 138.33 Sq. Mt.	811.61 - 841.63 Sq. Ft.	75.40 - 78.19 Sq. Mt.

Unit - 01



2.5 BHK Unit Plan

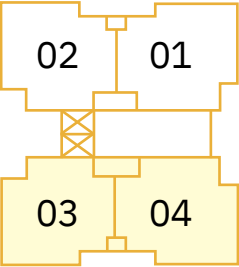
Unit - 03



Unit - 04

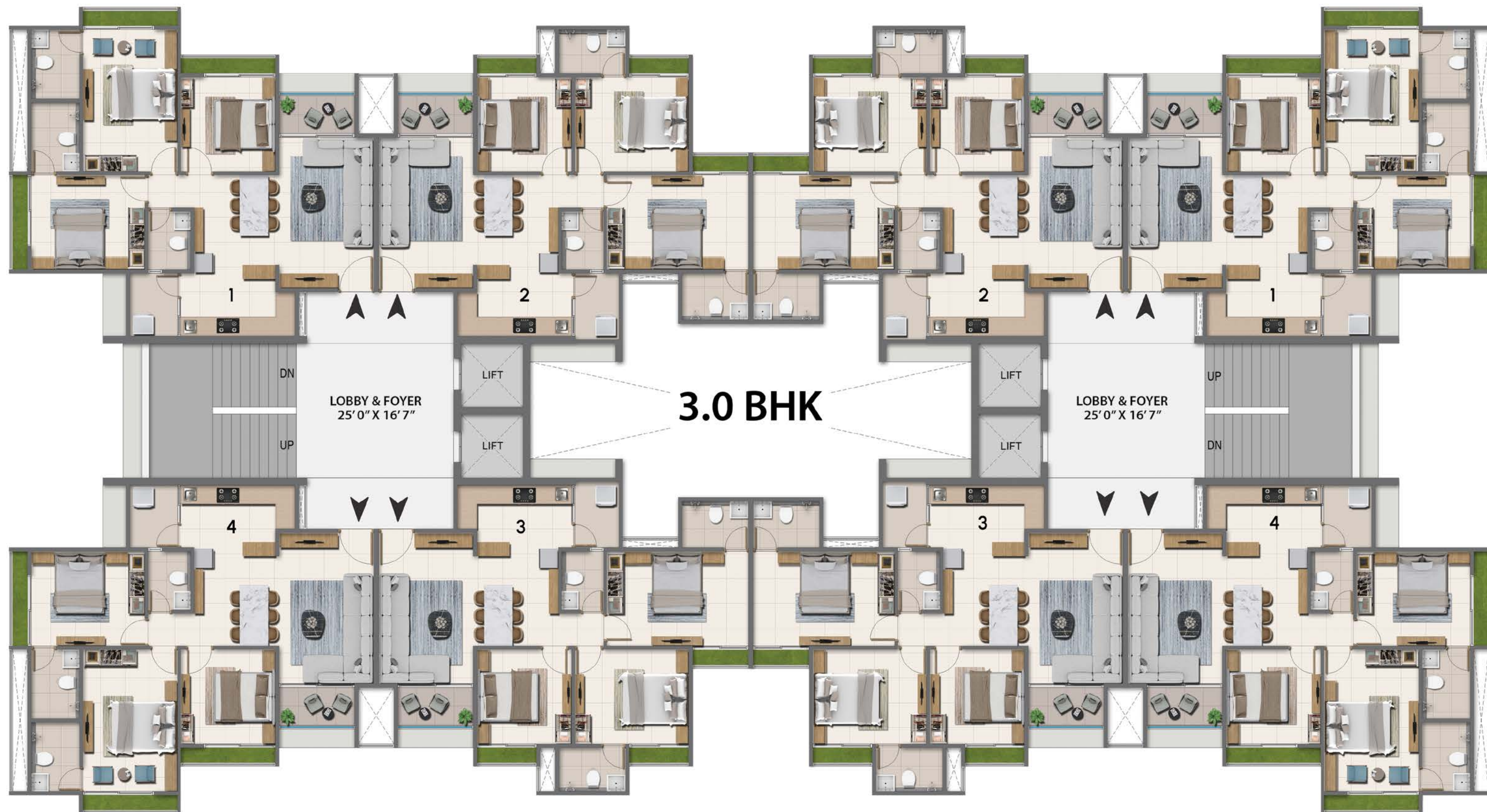


Key Plan



Unit Plan	Indicative Saleable Area		RERA Carpet + EA (Exclusive Area)	
2.5 BHK (Unit 3 & 4)	1,525 Sq. Ft.	141.68 Sq. Mt.	820.96 - 837.65 Sq. Ft.	76.27 - 77.82 Sq. Mt.

3 BHK Typical Floor Plan **A, B, I & J Block (1st to 10th Floor)**

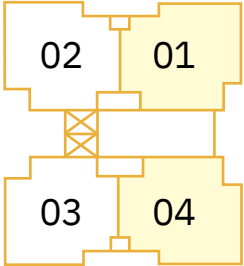


3 BHK Unit Plan

Unit - 01



Key Plan

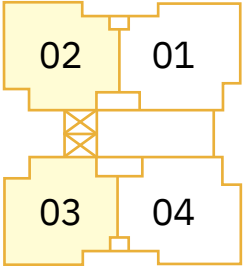


Unit Plan	Indicative Saleable Area		RERA Carpet + EA (Exclusive Area)	
3 BHK (Unit 1 & 4)	1,680 Sq. Ft.	156.08 Sq. Mt.	923.11 - 931.83 Sq. Ft.	85.76 - 86.57 Sq. Mt.

Unit - 02



Key Plan



Unit Plan	Indicative Saleable Area		RERA Carpet + EA (Exclusive Area)	
3 BHK (Unit 2 & 3)	1,680 Sq. Ft.	156.08 Sq. Mt.	908.90 - 927.20 Sq. Ft.	84.44 - 86.14 Sq. Mt.



A Symbol of Green Living

The central celebrations lawn makes the entire ambiance lively and natural. Also, it's the best spot for all the kids to play in the evenings.

Project Specifications

AREAS	FLOOR	INTERNAL WALLS	DOORS	WINDOWS	OTHERS
LIVING/ DINING ROOM	PREMIUM QUALITY VITRIFIED TILES	INTERNAL WALLS MARINE GYPSUM PLASTER/SINGLE MALA PLASTER WITH PUTTY FINISH	MAIN ENTRANCE DOOR : WOODEN FLUSH DOOR WITH LAMINATE ON BOTH SIDES	GLAZED POWDER COATED ALUMINIUM WINDOWS	—
MASTER BEDROOM	PREMIUM QUALITY VITRIFIED TILES	INTERNAL WALLS MARINE GYPSUM PLASTER/SINGLE MALA PLASTER WITH PUTTY FINISH	WOODEN FLUSH DOOR WITH PAINT FINISH ON BOTH SIDES	GLAZED POWDER COATED ALUMINIUM WINDOWS	—
OTHER BEDROOM	PREMIUM QUALITY VITRIFIED TILES	INTERNAL WALLS MARINE GYPSUM PLASTER/SINGLE MALA PLASTER WITH PUTTY FINISH	WOODEN FLUSH DOOR WITH PAINT FINISH ON BOTH SIDES	GLAZED POWDER COATED ALUMINIUM WINDOWS	—
KITCHEN	PREMIUM QUALITY VITRIFIED TILES	INTERNAL WALLS MARINE GYPSUM PLASTER/SINGLE MALA PLASTER WITH PUTTY FINISH	EXTERNAL DOOR: ALUMINIUM FRAME FLUSH DOOR	GLAZED POWDER COATED ALUMINIUM WINDOWS	CERAMIC TILE DADO UP TO 600 MM ABOVE GRANITE/MARBLE PLATFORM TOP WITH SS SINK
BALCONY/ TERRACES	MATT FINISH VITRIFIED TILES	—	—	—	—
MASTER BATHROOM	MATT FINISH TILES	CERAMIC TILE DADO UP TO LINTEL LEVEL	WOODEN FLUSH DOOR WITH PAINT FINISH ON BOTH SIDES	—	CP & SANITARY FIXTURES OF REPUTED BRAND
OTHER BATHROOM (S)	MATT FINISH TILES	CERAMIC TILE DADO UP TO LINTEL LEVEL	WOODEN FLUSH DOOR WITH PAINT FINISH ON BOTH SIDES	—	CP & SANITARY FIXTURES OF REPUTED BRAND
KITCHEN YARD	MATT FINISH TILES	CERAMIC TILE DADO UP TO SILL LEVEL ON PLUMBING WALL	—	—	CP FIXTURES OF REPUTED BRAND
EXTERNAL WALLS	DOUBLE COAT SAND FACE/MALA PLASTER WITH SEMI ACRYLIC PAINT				
WATER PROOFING	ADEQUATE CHEMICAL WATER PROOFING TREATMENT IN ALL BATHROOMS, WASH AREA & TERRACE CHINA MOSAIC FLOORING IN TERRACE				
ELECTRICAL	MODULAR TYPE SWITCHES, SINGLE PHASE/ THREE PHASE CONCEALED WIRING AND AC POINT IN MASTER BEDROOM, GEYSER POINT IN MASTER BATHROOM, ADEQUATE LIGHT POINTS IN EACH ROOM				

ARCHITECT & LANDSCAPE DESIGN : APURVA AMIN ARCHITECTS



Spaces that make every moment special.

Come, find your
#AddressOfGoodness

At **Adani Realty**, we believe in building spaces that live each moment with you and nurture your dreams. Your success, your memories, your happiness - your space is a part of it all. We thrive to build places that make you feel safe and provide an atmosphere for you to build your life moment by moment. We build an address that makes every day feel special and turns into your **#AddressOfGoodness**.

Adani Realty is the real-estate arm of Adani Group, one of India's leading infrastructure and development conglomerates. With its commitment to **'Nation Building'** and **'Growth with Goodness'**, Adani Realty has completed developing 15 Mn. sq. ft. and has 18+ Mn. Sq. ft. of real estate space under development which includes residential, commercial, retail and social club projects across Ahmedabad, Mumbai, Pune & Gurugram.

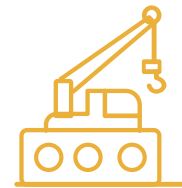
No matter what your choice of comfort is, there will always be something for you at Adani Realty. It is our commitment to give you the best possible lifestyle you can imagine. Because at Adani Realty, we don't just build timeless structures, we build the **#AddressOfGoodness**.



12+
Years Young



15
Mn. Sq. Ft.
Space Delivered



18+
Mn Sq. Ft.
Under Development



40+
Awards Won



7000
Happy Families

Residential | Commercial | Retail | Social Club



Scan To Locate Premium Lifestyle



Call : 1800 108 0009

PROJECT DEVELOPED BY ADANI INFRASTRUCTURE AND DEVELOPERS PVT. LTD. | WWW.ADANIREALTY.COM |

TP 34, FP 5, Near Krishna Heights Cross Roads, Malabar County Road, Jagatpur, North-West Ahmedabad, Gujarat - 382470
PROJECT LISTED ON WWW.GUJRERARI.GUJARAT.GOV.IN | RERA NO: PR/GJ/AHMEDABAD/AHMEDABAD CITY/AUDA/RAA09989/310322

Disclaimer: "This is not an advertisement within the meaning of RERA. This is not an offer, an invitation to offer and/or commitment of any nature. The images include artistic impressions and for representation purpose only. This information is presented as indicative general information and no warranty is expressly or impliedly given that the completed development will comply in any degree with such artists impression or represented images as depicted. All content relating to this project are provided solely for the purpose of information and reference. The communication is subject to change in case of revised plan and RERA project alteration. We reserve the right to provide certain insertions of detailed layout plan pertaining to the specific unit/building/wing to the recipient. The sale is subject to terms of application form and Agreement for sale. The recipient is deemed to have been notified and agreeable to the same."